



Night School

CREDIT NIGHT SCHOOL 2011-2012 Curriculum Fall (Semester 1) - September 14 to December 14, 2011

Grade Level	Course Code	Level		Bramalea	T.L. Kennedy
11	ENG 3C0	C	English	✓	
11	ENG 3U0	U	English		✓
11	GWL 300	O	Designing Your Future	✓	✓
11	MBF 3C0	C	Mathematics of Personal Finance		✓
11	MCF 3M0	U/C	Functions	✓	
11	SCH 3U0	U	Science - Chemistry	✓	
12	CGW 4U0	U	Canadian and World Issues	✓	
12	CLN 4U0	U	Canadian and International Law		✓
12	OLC 400	O	English - Ontario Secondary School Literacy Course	✓	✓
12	ENG 4C0	C	English	✓	✓
12	ENG 4U0	U	English	✓	✓
12	HHS 4M0	U/C	Individuals and Families in a Diverse Society	✓	✓
12	MAP 4C0	C	College and Apprenticeship Mathematics	✓	
12	MDM 4U0	U	Mathematics of Data Management		✓
12	SBI 4U0	U	Science - Biology	✓	
12	SCH 4U0	U	Science - Chemistry	✓	
12	SPH 4U0	U	Science - Physics		✓

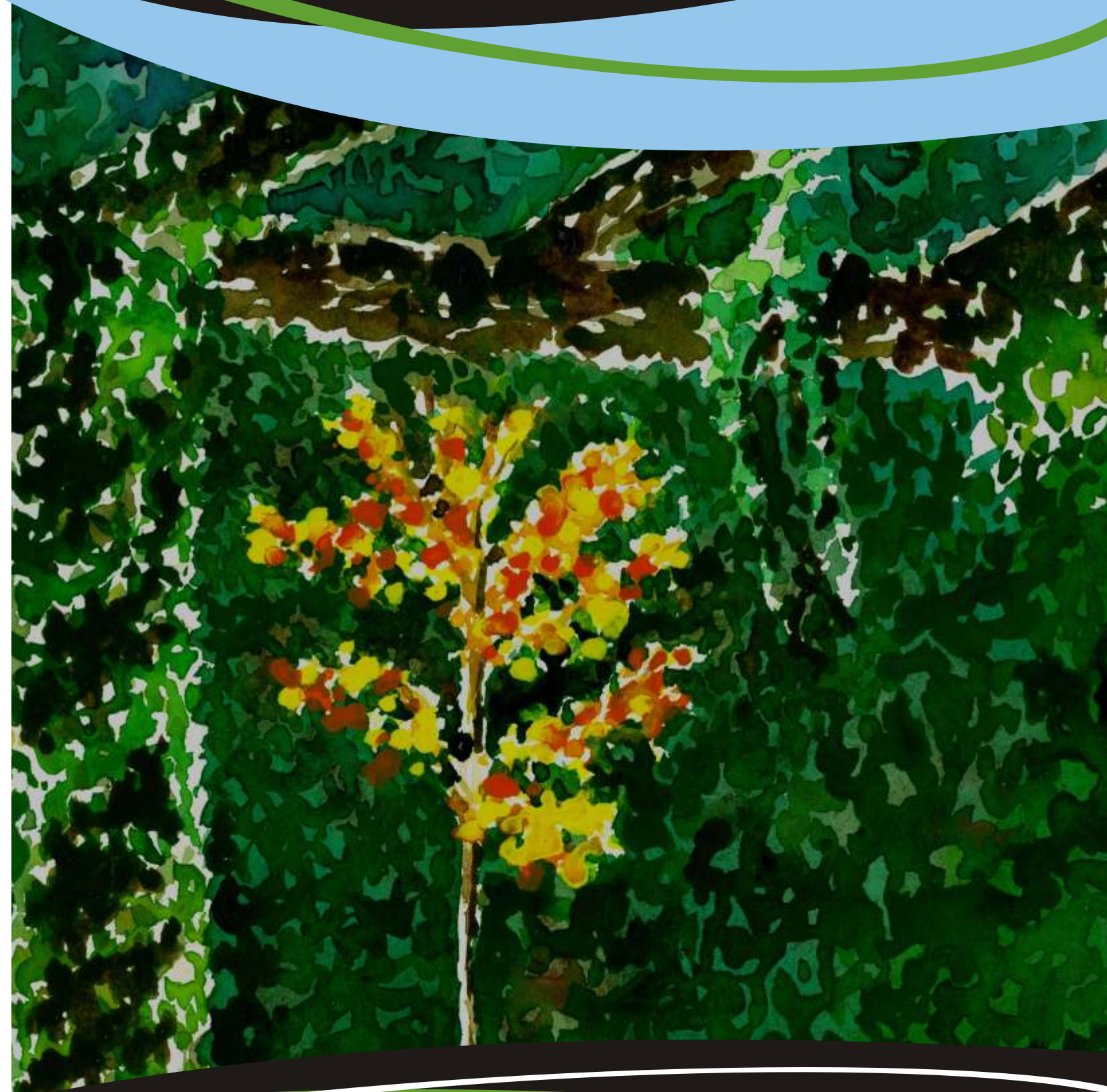
O = Open, U = University, C = College, U/C = University and College

General Information for In-Class Students

- All night school courses are conditional upon sufficient enrollment and are subject to cancellation. On September 9th any courses with insufficient enrollment will be cancelled.

Interruption of Schedule

- If a class must be cancelled due to weather, an additional class will be added at another time during the semester.





Night School

Secondary School Diploma Courses

Semester 1 - Fall 2011/2012

The Peel District School Board offers secondary school credit courses after regular day school hours, **for approved students**, at these locations:

Bramalea S.S.

510 Balmoral Drive
Brampton, Ontario

T. L. Kennedy S.S.

3100 Hurontario Street
Mississauga, Ontario

Course Dates:

September 14 to December 14, 2011

Course Times:

Mondays and Wednesdays, 6:30 p.m. to 10 p.m.

Registration:

Peel DSB and **Dufferin-Peel Catholic DSB** day school students may be registered by their guidance counsellors at their home schools. Adults and day school students from other boards may register in person at Continuing Education. Day school students must bring an authorized registration form and a transcript. Adults must bring a transcript and proof of citizenship.

All registration ends by noon on Friday, September 9, 2011.

Registration Hours:

Monday to Friday from 8:30 a.m. to 4 p.m.
Thursday until 5:30 p.m.

Registration Dates:

September 6 to 9, 2011

Evening registration will be held on Monday, September 12, 2011 at the Night School sites. Registration will take place from 6:30-8:30 p.m.

No registration will take place on the first night of classes.

Late registration for the limited space available will take place at the Night School sites on Thursday, September 15, 2011. Registration will take place from 6:30-8:30 p.m.

Continuing Education

Adult Education Centre South, Room 116
100 Elm Drive W.
Mississauga, Ontario

Check our website <http://www.peelschools.org/conted> for information about documentation required for registration.

Continuing Education - Online Night School Courses

For information on online course offerings, check out our web site at: www.peelschools.org/con-ed-online

Grade Level	Course Level	Session 1 (Sep 14 to Oct 31) and Session 2 (Nov 2 to Dec 14)	Course Code
10	N/A	Civics (0.5 credit)	CHV 2OZ
10	N/A	Career Studies (0.5 credit)	GLC 2OZ
Full Credit - September 14 to December 14, 2011			
11	O	Designing Your Future	GWL 3OZ
11	U	Computer and Information Science	ICS 3UZ
12	U	Canadian and World Issues: A Geographic Analysis	CGW 4UZ
12	C	English	ENG 4CZ
12	U	English	ENG 4UZ
12	U	Computer and Information Science	ICS 4UZ
12	U	Calculus and Vectors - University	MCV 4UZ
12	C	Math for College Technology	MCT 4CZ
12	U	Earth and Space Science	SES 4UZ

General Information for On-line Students

- Students may only take one night school credit whether online or in class.
- Final day to register is Friday before classes begin.
- Courses with insufficient enrolment will be cancelled on these dates. Please check the website for updates.

First Night Orientation

- Students are expected to attend the orientation at John Fraser S.S. Orientation will be on Tuesday, September 13, 2011 for **ALL** courses.
- Please check the website for orientation times for each course.
- If unable to attend, follow the process as outlined on www.peelschools.org/con-ed-online to begin the course on time.

Proctoring

- The following courses will be proctored for Semester 1: SES4UZ